

123

FITZROY STREET ST KILDA

Retail @ the Hive.
MILTON HOUSE



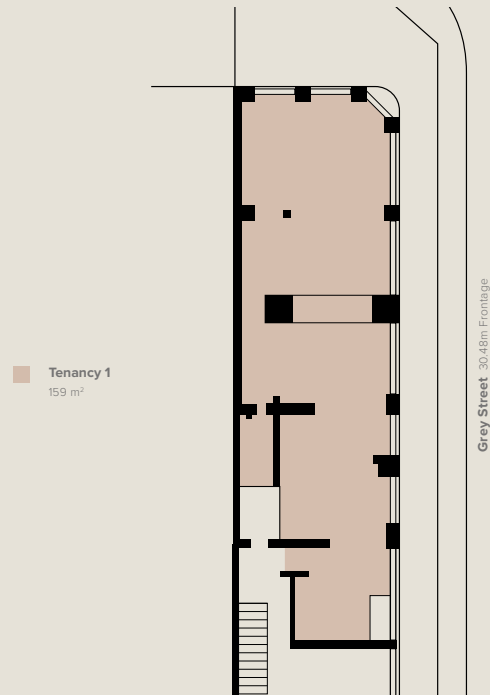
Pre leasing now. Boutique retail opportunities.

the Hive.
MILTON HOUSE

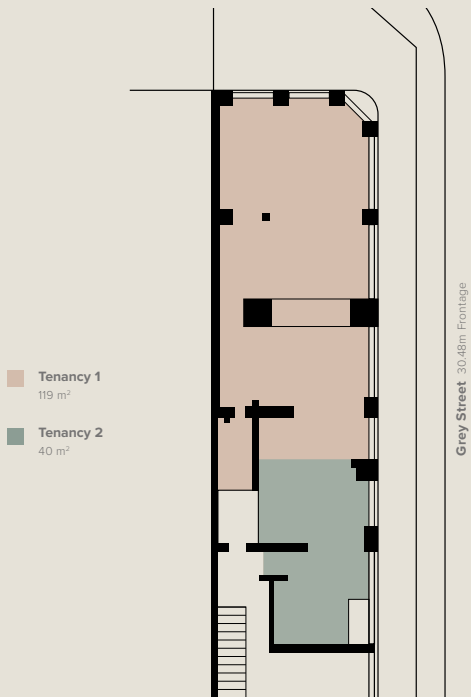
teskacarson

Take one or both

1 tenancy



2 tenancies



The iconic and fully refurbished building, located on the corner of Fitzroy Street and Grey Street, presents opportunity to be a part of St Kilda's revitalisation. The Ground Floor retail offerings are amongst amenities and leading co-working network The Hive across Levels 1, 2 and 3.

Property Features

- New floor-to-ceiling windows
- Abundance of natural light throughout
- High ceilings
- Commercial 1 Zoning
- Signage Rights
- Highly exposed corner
- Flexible floorplates
- Easy access to major arterials and public transport, providing tenants with plenty of options when commuting to and from work

Base Building Specifications

- Three (3) phase power
- Separate meters
- Soffit to entire street frontage
- Grease trap allowance
- Fire sprinklers
- Concrete floors
- Rubbish / storage
- Services

Project Completed by

- Therefore Architects
- Jack Merlo Landscaping

teskacarson

6 Yorkshire Street, Richmond
teskacarson.com.au

Level 6, 50 Queen Street, Melbourne



LUKE BISSET
Sales Executive
0400 344 211
lbisset@teskacarson.com.au



REECE ISRAEL
Sales and Leasing Executive
0433 572 343
risreal@teskacarson.com.au